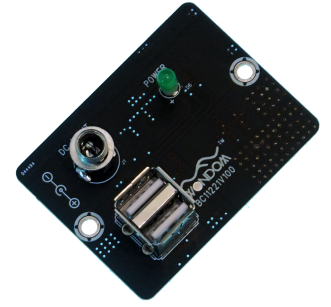


# BCPB Accessories Series

## BCPB/DC Input Conversion Board w BC1.2 USB Charging Port



### Overview

The 2-port USB charger on battery extension board supports USB charging specification, revision 1.2 (BC 1.2) which could automatically config D+ and D- lines connections for an attached device. The battery extension board automatically adjusts its output level based on the connected device. It is compatible with smartphones and tablets from Apple, Samsung and Google. The extension board can charge up to two devices at the same time, which can get more output than ordinary dual-port chargers. A maximum output of 5.25V/2.1 A brings you to a whole new level of high-speed charging. With the equipped DC input jack, it can be used to charge the BCPB4. Besides, it can be panel mounted. If you need this, please don't hesitate to contact us.

### Key Features

- Available for BC1.2 Protocol
- DC input Jack
- Power Indicator
- Aluminum mount panel customizable
- Weight: 48g/0.11lbs (±10%)
- Size: 2.40inchX1.80inchX1.0inch

### Characteristics

1. Available for BC1.2 Protocol  
Two USB charging ports are both available for BC1.2 Protocol, which can charge all the portable devices, with 2.1A maximum per port.
2. Equipped with DC Input Jack  
The battery extension board is equipped with CD input jack.
3. Power Indicator  
A green power indicator is used to clearly show customers the status of this board.

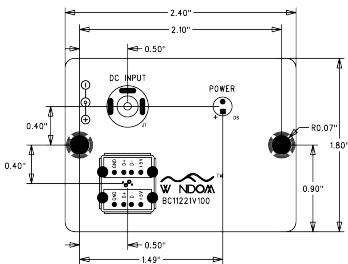
### Electrical Specifications

Specifications typical @ +25°C unless otherwise noted. Specifications subject to change without notice.

Parameter(s)	Conditions	Min.	Typ.	Max.	Unit(s)
Supply power	-	8	12	24	VDC
Idle current	VIN=12V	-	25	50	mA
USB ports output voltage	VIN=12V	4.75	5.1	5.25	V
USB ports output current	Vusb=5.1V	-	-	2.1	A
Operating temperature	-	-	20	50	°C
Storage temperature	-	-20	20	105	°C

All parameters were tested with an ESCORT 3146A multimeter. For authorized distributors and OEM customers who need more detailed performance graphs and parameter settings, please send an inquiry e-mail to us. (Not available for retail customers)

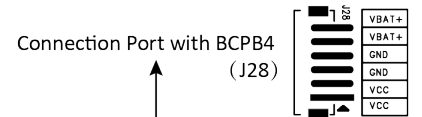
### Mechanical Dimensions



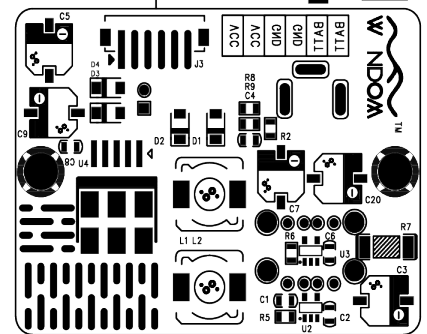
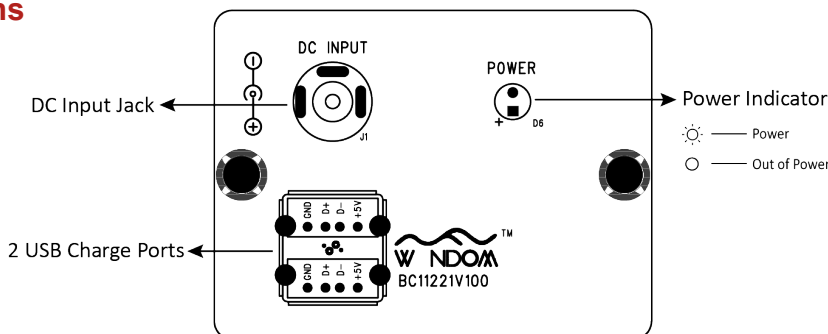
Dimensions	A (inch/mm)	A1 (inch/mm)	D (inch/mm)
	2.40/60.96	2.10/53.34	0.14/3.8
Dimensions	B (inch/mm)	B1 (inch/mm)	
	1.80/45.72	0.90/22.86	

### Notes:

- The typical diameter of the screw hole is 3.8mm, which is suitable for the Φ3, 6# -32 screws.
- All dimensions are typical in inches/mm
- Tolerance x.xx = ±0.02(±0.50)



### Connections



## Sure Electronics

Make Your Audio Application Simple!

NO.9, Weidi Road, Xianlin University City, Qixia District,  
Nanjing, Jiangsu Province, P.R.C



[www.sure-electronics.com](http://www.sure-electronics.com)

[www.wondom.com](http://www.wondom.com)

Mail: [store@sure-electronics.com](mailto:store@sure-electronics.com)

Skype: surewebstore